

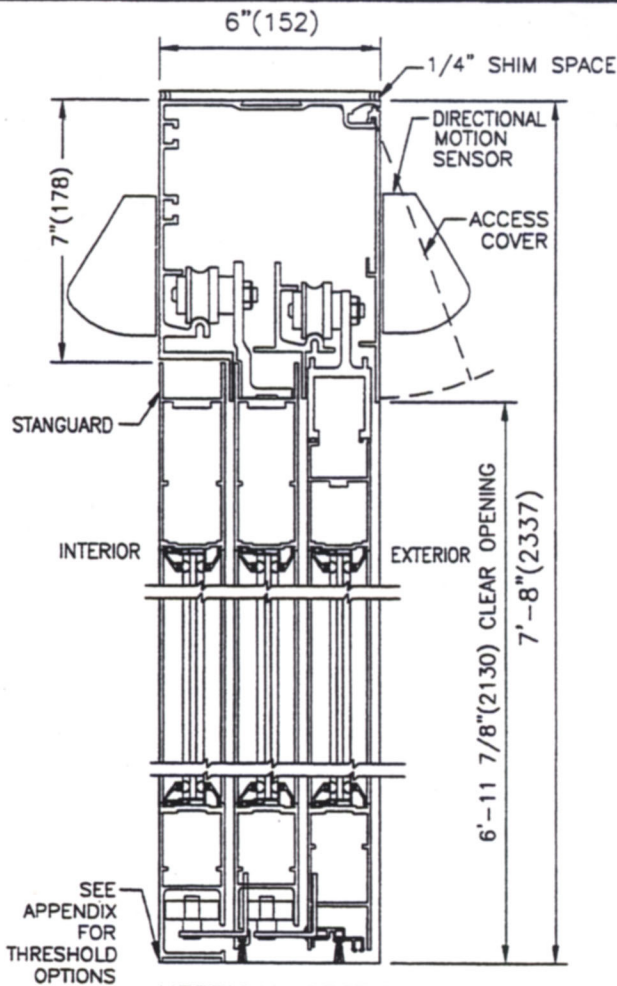
STANLEY

JOB NAME _____
 LOCATION _____
 DOOR NUMBER _____
 SHEET _____ OF _____

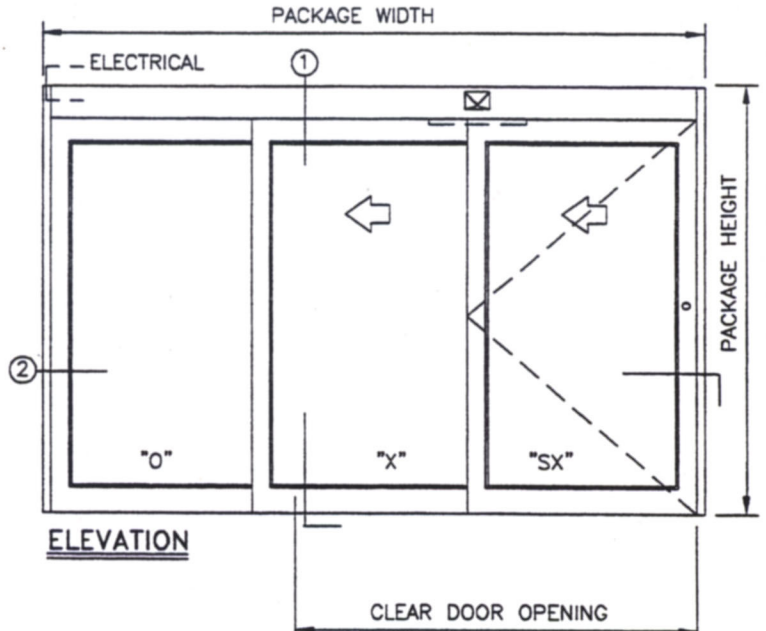
DURA-GLIDE 5200

3 PANELS: 0-X-SX
 LEFT HAND

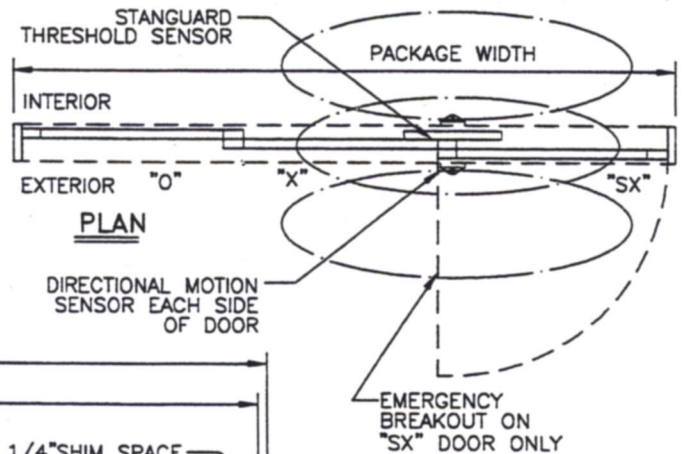
STANLEY DOOR PACKAGES ARE INDIVIDUALLY ENGINEERED TO FIT YOUR JOB REQUIREMENTS



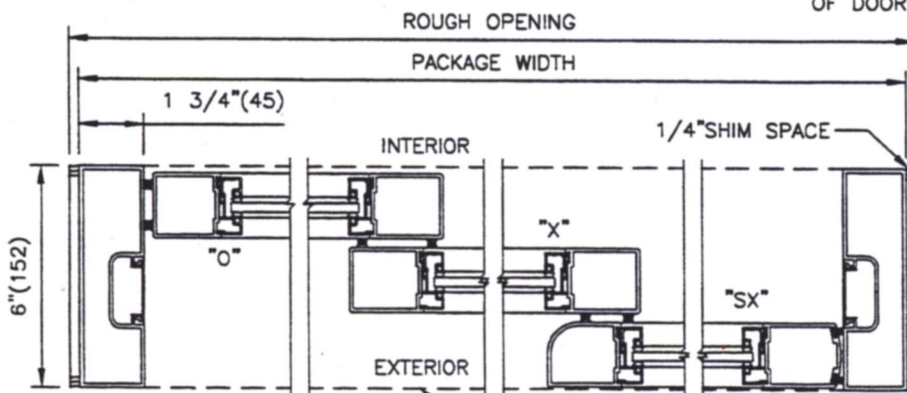
① VERTICAL SECTION



ELEVATION



PLAN



② HORIZONTAL SECTION

SAMPLE PACKAGE WIDTH INFORMATION

PKG. WIDTH	NOMINAL CLEAR DOOR OPENING	SLIDING DOOR / PANEL NOM. WIDTH	EMERGENCY BREAKOUT NOM. WIDTH
7'-0"	44"	28 1/2"	26"
8'-0"	52"	32 1/2"	30"
9'-0"	60"	36 1/2"	34"

NOTES:

1. DETAILS NOT TO SCALE.
2. ELECTRICAL REQUIREMENTS:
120VAC, 5AMPS MIN. TO OPERATOR BY ELECTRICAL CONTRACTOR.
3. SEE APPENDIX FOR ADDITIONAL INFORMATION.

3 PANEL FORMULAS

PACKAGE WIDTH = 1.5 X CLEAR DOOR OPENING + 17 1/8"
 CLEAR DOOR OPENING = 2/3 PACKAGE WIDTH - 11 7/16"
 EMERGENCY BREAKOUT WIDTH = DOOR PANEL WIDTH - 2 9/16"
 DOOR PANEL WIDTH = 1/3 PACKAGE WIDTH + 1/2"